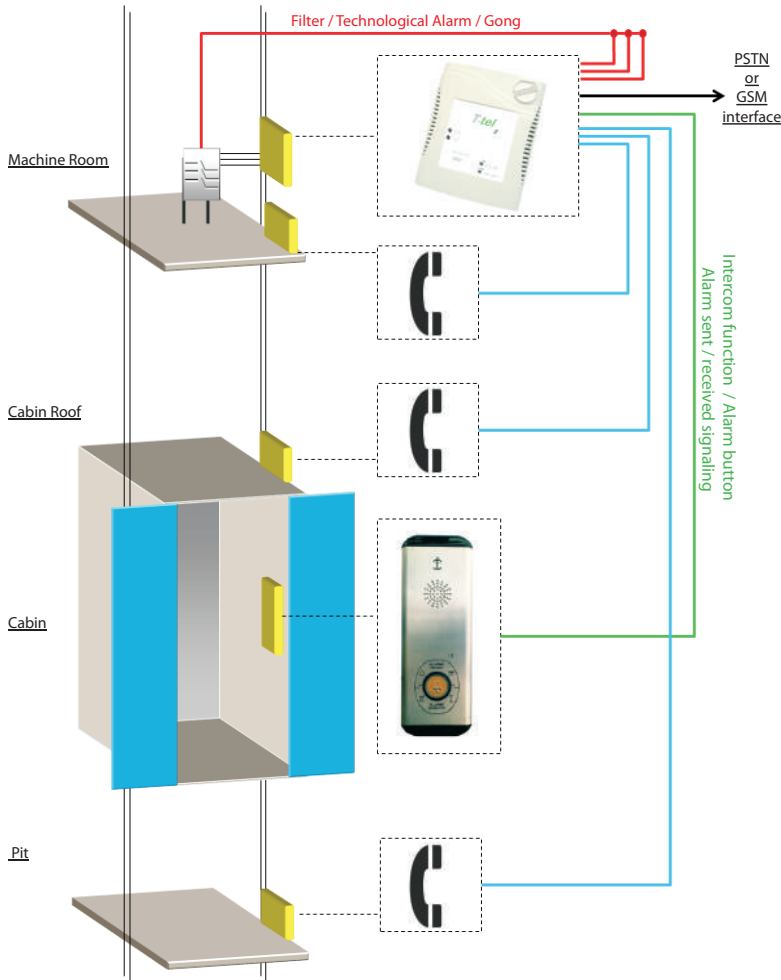


T.tel2

Lift Emergency Telephone System for PSTN telephone line

T.tel2 is a lift emergency telephone system for public telephone line. It can be connected to GSM or UMTS line through a GSM/UMTS interface. Flexible solution easy to install and program. Compatible with communication protocols of the most of call centers. Installation close to the control panel or on the top of the cabin.

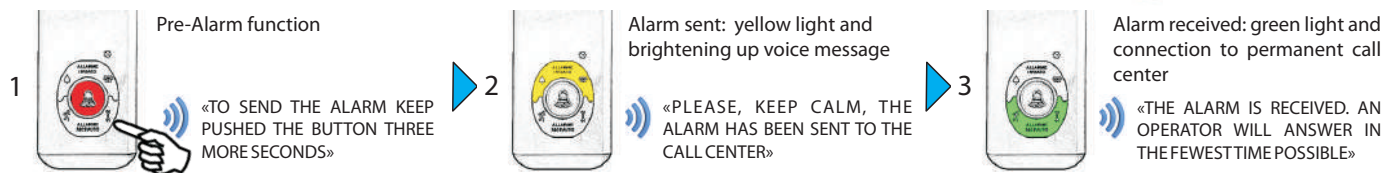


SPECIFICATIONS:

- **Standard speakerphones** and telephone terminals supported
- **3 independent telephones** for maintainers alarm (Machine Room, Top of the cabin, Pit)
- **3 inputs** programmable as Filter, Auxiliary Alarm, Technological Alarm or GONG in the cabin
- **Alarm and technological inputs** programmable NO or NC
- **Voice guide messages**, programming help messages and data verification messages, also multilanguages
- **Local and remote programming**
- **Test 72h** programmable and on demand
- **5 telephone numbers to call** for car and maintainers alarms
- **6 telephone numbers to call** for: End of Alarm, TEST call, Battery Alarm, Auxiliary Alarm, Technological Alarms
- **Ademco Contact ID and TELEDIF DTMF** protocols supported
- **2 relays** for alarm sent and received or for remote control functions
- **Telephon line control**
- **Intercom functions** between the system and the telephones connected to it
- **Self-diagnosis Test** with voice reports



HOW IT WORKS

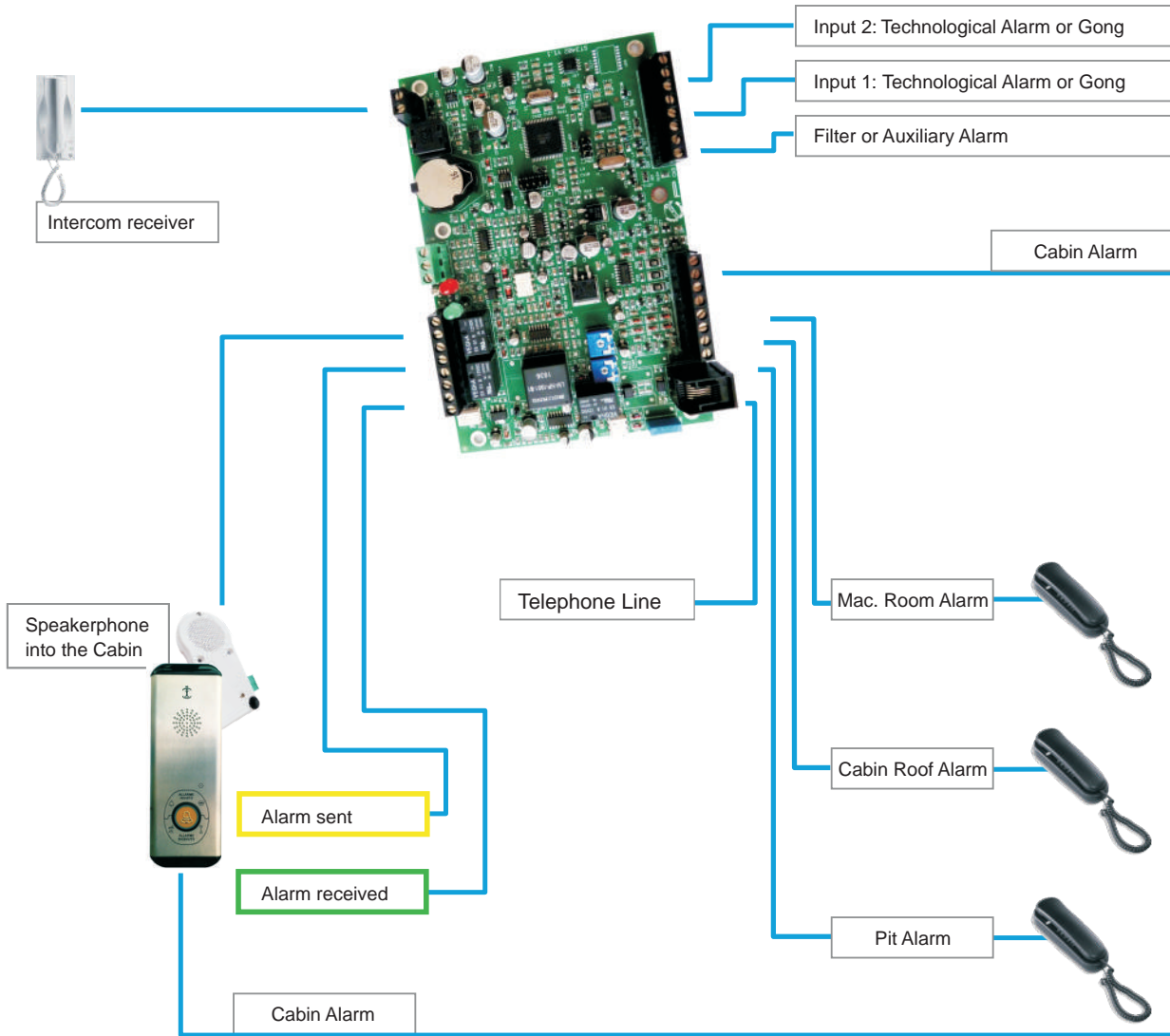


FUNCTIONS ACTIVABLE FROM THE TELEPHONES



T.tel2

Lift Emergency Telephone System for PSTN telephone line



Where to install

Power Supply

Power consumption max. (@12 Vdc)

Power consumption min. (@12 Vdc)

Relay contacts flow

Dimensions

Weight

Machine Room, Fixed to the wall, On Cabin Roof

10 ÷ 16 Vdc

240 mA

30 mA

3A @ 120 Vac / 3A @ 24 Vdc

165 x 184 x 35 mm

200 g

Internal clock with automatic update to daylight saving

ACCESSORIES

TLF 3301
Power Supplier



TLF 2101
Universal Speakerphone



TLF 1324
GSM / UMTS



TLF 2222
Cabin plate



TLF 1133
Intercom receiver



TLF SW620-FM
BCA Telephone

