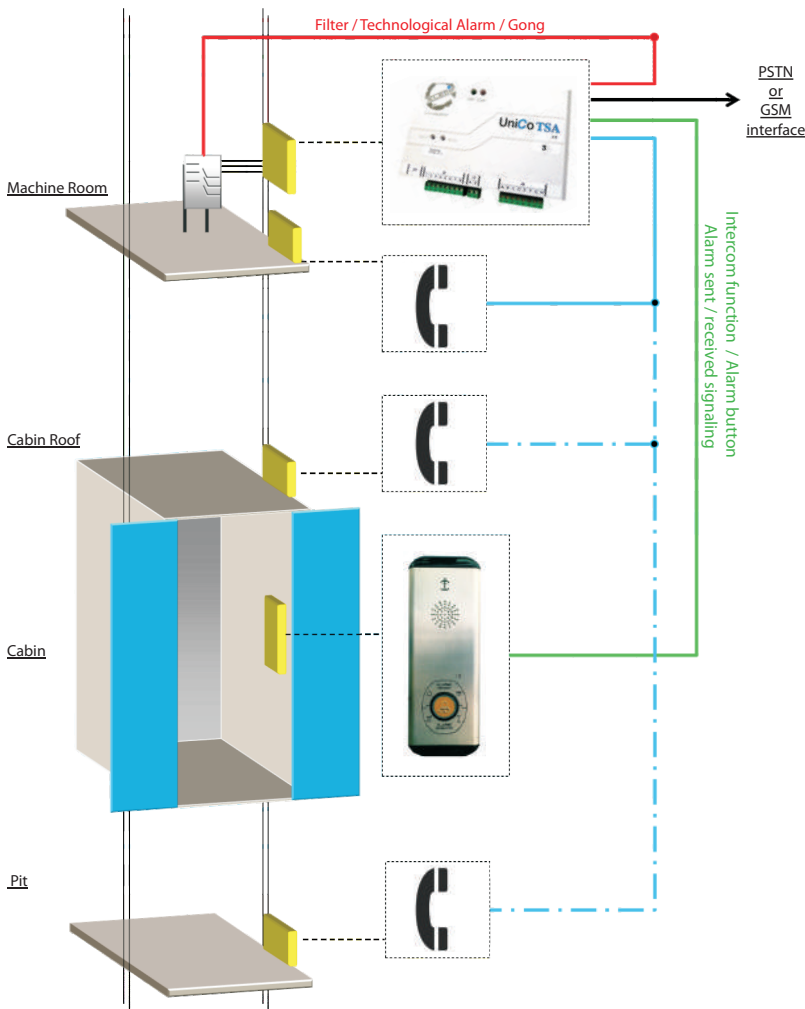


# Unico TSA3

## Lift Emergency Telephone System for PSTN telephone line

Unico TSA3 is a lift emergency telephone system for public telephone line. It can be connected to GSM or UMTS line through a GSM/UMTS gateway. Flexible solution easy to install and program. Compatible with communication protocols of the most of call centers. Installation close to the control panel or on the cabin roof.

Unico TSA3

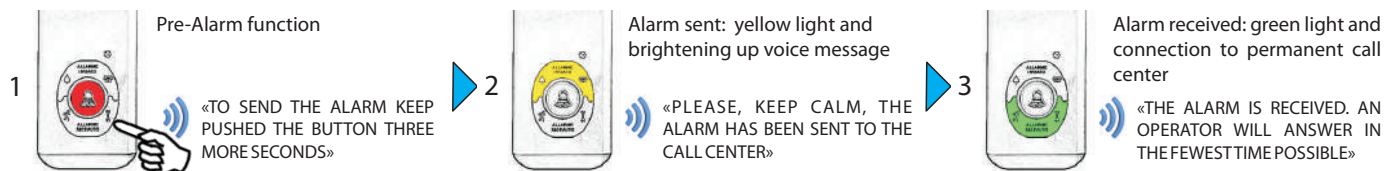


### SPECIFICATIONS:

- **Standard Speakerphones** supported
- **Telephone** for maintainers alarm (Cabin Roof, Pit, Machine Room)
- **1 input** for technological alarm, filter or Gong
- **Technological and Alarm Input** programmable NO or NC
- **Voice System Messages**, also multilanguage
- **Local or Remote Programming** via telephone
- **72hours Test Calls** scheduled and on demand
- **5 numbers** for car and maintainers alarms
- **4 numbers** for: End of Alarm, TEST Calls, Battery Alarm, Auxiliary or Technical Alarm
- **Alarms forwarding** in Voice and CLI modalities
- **Communication Protocol:** TELEDIF DTMF
- **2 Relays** for alarm sent / alarm received or for remote control functions
- **Programmable control** of telephone line signal
- **Intercom Function** between the cabin and all connected terminals
- **Self-diagnosis** with voice alerts
- **Only 2 wires** to connect the maintainer telephones on the Cabin Roof, in the Pit and in the Machine Room



### HOW IT WORKS

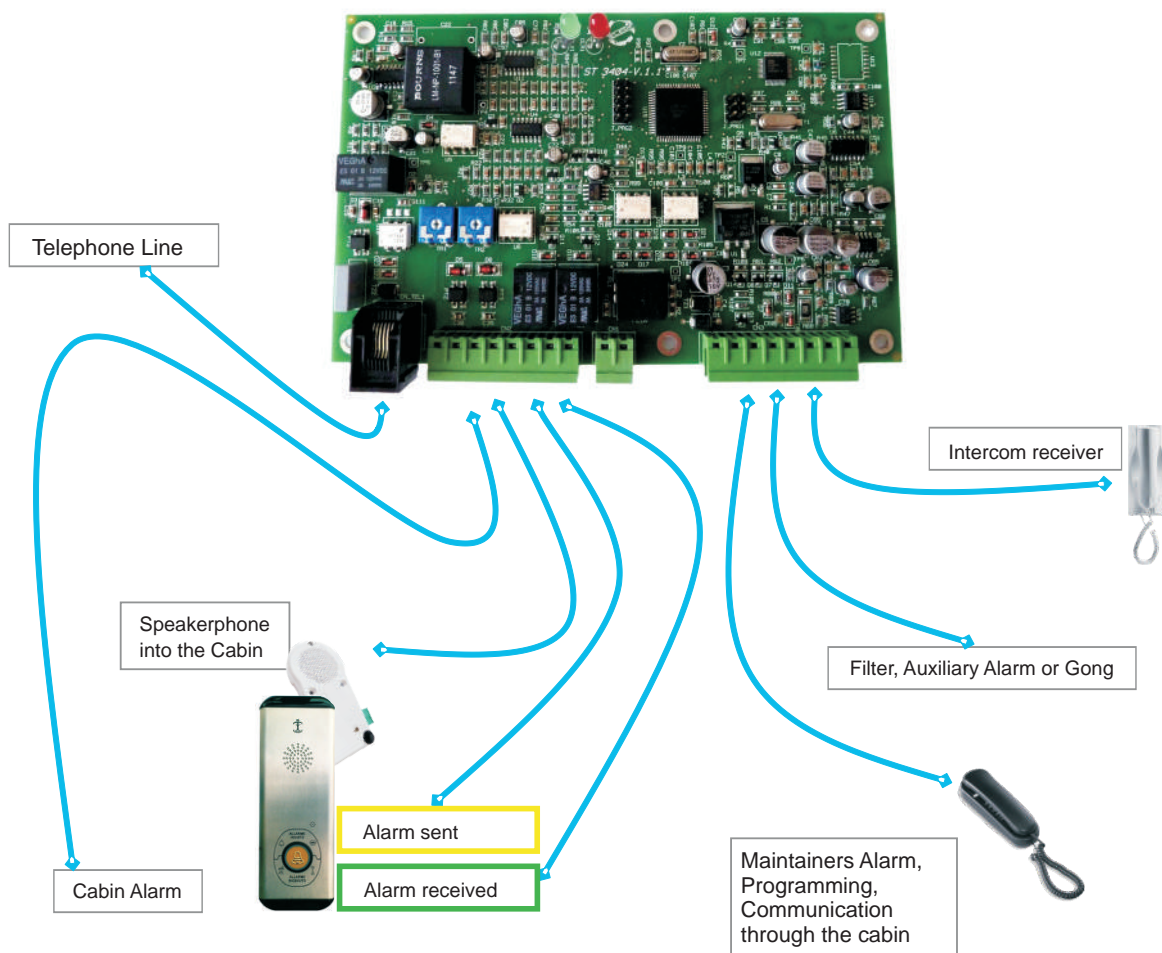


### FUNCTIONS ACTIVABLE FROM THE TELEPHONES



# Unico TSA3

Lift Emergency Telephone System for PSTN telephone line



**Where to install**

- Power Supply**
- Power consumption max. (@12 Vdc)**
- Power consumption min. (@12 Vdc)**
- Relay contacts flow**
- Dimensions**
- Weight**

*Machine Room, Fixed to the wall, On Cabin Roof*  
 10 ÷ 16 Vdc  
 240 mA  
 30 mA  
 3A @ 120 Vac / 3A @ 24 Vdc  
 167 x 107 x 28 mm  
 275 g

## ACCESSORIES

<p>TLF 3301 Power Supplier</p>	<p>TLF 2101 Universal Speakerphone</p>	<p>TLF 1324 GSM / UMTS</p>	<p>TLF 2222 Cabin plate</p>	<p>TLF 1133 Intercom receiver</p>	<p>TLF SW620-FM BCA Telephone</p>
					